

2019 Recruitment Look Book

UNIVERSITY OF HOUSTON
HOUSTON PANHELLENIC COUNCIL



Welcome to Greek Life

Dear future Panhellenic sister,
Firstly, I am so excited that you are joining us at the University of Houston and contemplating joining Greek life! It feels like just yesterday I made the decision to apply for primary recruitment. Coming from a family with no Greek members and not having any friends in Greek life, I was clueless about the process and what exactly I was getting myself into. Little did I know that joining a sorority would have such an amazing impact on my life! From the excitement of bid day, to getting a big, to making lifelong friends and connections, going Greek has given me so many opportunities that I am beyond thankful for. I have gained an immeasurable amount of leadership and professional skills and grown so much as a woman. The chance to share and spread my love of Greek life with others is what motivated me to be on Panhellenic Exec. My goal as Vice President of Recruitment is to make this the BEST experience for YOU! The recruitment team, Panhellenic Exec, and all Panhellenic women at UH are working to make the process welcoming, inspiring, inclusive, and fun. Ultimately, the point of recruitment is to help you find your home within Greek life! We created this look book for you to use to learn more about our community. Enclosed you will find information about what it means to be a sorority woman, facts about each chapter, and details about the primary recruitment process. We hope this book answers any questions you have, but if not please feel free to reach out to us. We are so excited to meet you! See you soon!

Katherine Turner
Vice President of Recruitment
hpc.recruitment.uh@gmail.com





TABLE OF CONTENTS

IMPORTANT INFORMATION	5
CFSL Info Page	6
Greek Councils	7
Greek Alphabet	8
Greek Dictionary	9
Who We Are	10-11
Our Community Statistics	12
Panhellenic Executive	13
Financial Info	14
Your First Year	15
Expectations And Requirments	16
Campus Panhellenic Traditions	17
RECRUITMENT INFORMATION	18
Recruitment Team	19
Recruitment Counselor	20
Primary Recruitment Info	21
Sisterhood Round	22
Philanthropy Round	23
Preferance Round	24
Bid Day	25
Recruitment Tips	26
OUR CHAPTERS	28
Alpha Chi Omega	30
Chi Omega	31
Delta Gamma	32
Delta Zeta	33
Phi Mu	34
Sigma Kappa	35
Zeta Tau Alpha	36
JOIN OUR COMMUNITY	37

Important Information

CENTER FOR FRATERNITY AND SORORITY LIFE



Jason Bergeron

Director
advises the Multicultural Greek Council (MGC)



Javon Miller

Fraternity/Sorority Housing Coordinator
advises the Interfraternity Council (IFC)
and the HPC Recruitment Team



Pam Moon

Office Coordinator

Cassandra Joseph

Assistant Director
advises the Houston Panhellenic Council (HPC)
and the United Greek Council (UGC)



Terrance Akins

Graduate Assistant
advises National Pan-Hellenic Council (NPHC)



The Center for Fraternity & Sorority Life Ambassadors are a group of fraternity and sorority leaders who serve as student representatives of the Center. In this role, the CFSL Ambassadors are selected and trained to provide support, programming, and peer education to the University of Houston fraternity/sorority community.

GREEK COUNCILS AND ORGANIZATIONS AT THE UNIVERSITY OF HOUSTON

Houston Panhellenic Council:

Panhellenic is the governing body for 7 of the 26 national/international sororities that belong to the National Panhellenic Conference. Panhellenic sponsors and coordinates Formal Recruitment each fall semester. Panhellenic women at UH average higher GPAs than the all-women's UH average. Our mission as an organization is guided by our Panhellenic creed, as well as 4 purposes; we are leaders, we are students, we are philanthropists, and we are sisters.

Interfraternity Council (IFC):

The Interfraternity Council at the University of Houston is a self-governing organization of 14 North-American Interfraternity Conference (NIC) and historically-NIC fraternities that promote chapter collaboration and unified fraternal action. With some of the most prestigious national organizations in the University of Houston Greek community, IFC strives to build a stronger community by providing leadership, educational and intramural opportunities for all of its chapter members.

Multicultural Greek Council (MGC):

Founded on the University of Houston campus in 2003, MGC governs 15 culturally-oriented and faith-based fraternities and sororities. MGC sponsors community service projects and leadership development for its member organizations, in addition to creating policies that govern each of the participating chapters. Sorority chapters include: alpha Kappa Delta Phi, Delta Phi Omega, Kappa Delta Chi, Sigma Phi Omega, and Sigma Sigma Rho.

National Pan-Hellenic Council (NPHC):

The National Pan-Hellenic Council is the governing body for the "Divine Nine" historically African-American fraternities and sororities. NPHC aims to unify the 7 member organizations represented on the UH campus through an emphasis on community service, academics, leadership development and collaboration. Sorority chapters include: Alpha Kappa Alpha Sorority, Inc., Delta Sigma Theta Sorority, Inc., Zeta Phi Beta Sorority, Inc., and Sigma Gamma Rho Sorority, Inc.

United Greek Council (UGC):

The United Greek Council (UGC) was officially established in April 2012 as the Latin Greek Council in order to unite and promote the appreciation of Latino Greek lettered organizations and the Latino/a culture. United Greek Council is open to everyone and acts in the best interest of the University of Houston. UGC will encourage scholastic achievement among its member organizations and provide a forum for discussion of general concerns, issues, and topics that affect member organizations. Sorority chapters include: Gamma Rho Lambda, Lambda Theta Alpha Latin Sorority, Inc., and Sigma Lambda Gamma National Sorority, Inc.

Special Interest Greek Organization:

Phi Sigma Rho, social engineering sorority

GREEK ALPHABET

ALPHA

BETA

GAMMA

DELTA

EPSILON

ZETA

ETA

THETA

IOTA

KAPPA

LAMBDA

MU

NU

XI

OMICRON

PI

RHO

SIGMA

TAU

UPSILON

PHI

CHI

PSI

OMEGA

GREEK DICTIONARY

active: a sorority member currently in college who has been formally initiated by her chapter

alumna: an initiated sorority member who is no longer active in a collegiate chapter

badge: a unique insignia of fraternity or sorority membership worn by initiated members

bid: a formal invitation to join a fraternity or sorority

bid day: the last day of primary recruitment when PNM receive bids to join chapters and become new members

big sister: also referred to as "big," an active member of the chapter who is paired with a new member as a mentor

chapter: a local member group of a national organization

continuous open bidding (COB): a period where a sorority not at campus total is able to recruit members. The COB process is less formal and all chapters may not participate.

Houston Panhellenic Council (HPC): the governing body of the seven National Panhellenic Conference sororities at the University of Houston.

Houston Panhellenic Council Executive Committee: The nine undergraduate women that lead the Houston Panhellenic Council and it's community.

Initiation: the formal ceremony that brings new members into full membership of a fraternity or sorority

legacy: a PNM whose mother, sister, or grandmother is an alumna or active member of a particular sorority.

Membership Recruitment Acceptance Binding Agreement (MRABA): a document that each PNM completes immediately following selections after Preference Round. This is a binding agreement that states that the PNM is willing to accept a bid from any sorority on her list.

National Panhellenic Conference (NPC): founded in 1902, NPC provides support and guidance for its 26 member inter/national sororities and serves as the national voice on contemporary issues of sorority life. NPC serves as the umbrella organization for HPC.

new member: a student who has accepted a bid for membership. After a period of education regarding the sorority or fraternity, ranging 6-8 weeks, the student is initiated to become a full member.

new member educator/director: a chapter member who has been elected to lead the new member education process and prepare new members for initiation

philanthropy: a national and/or local charity that a sorority sponsors, donating time and money through service

potential new member (PNM): any woman who is eligible to participate in the primary recruitment process

recommendation: a written letter or statement from alumna introducing and recommending the PNM for membership

Recruitment: a designated membership recruitment period during which a series of organized events are held for the purpose of selecting new members

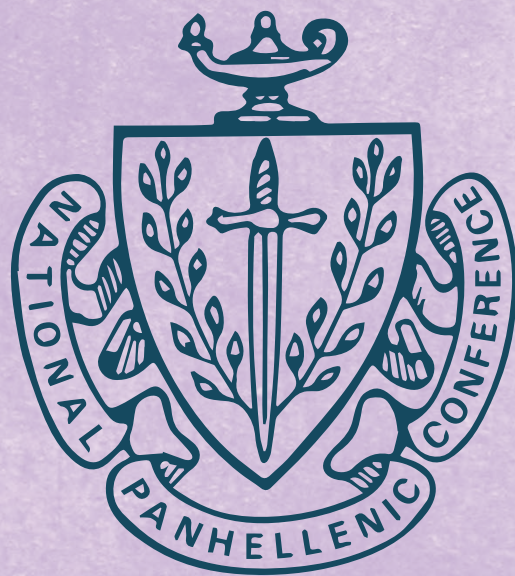
Recruitment Counselor (RC): a sorority member who does not participate in primary recruitment with her chapter, but helps to assist PNMs through the process. Each PNM will be assigned to a RC group.

round: a particular day of recruitment. There are four rounds: Sisterhood round 1, sisterhood round 2, philanthropy round, and preference round. Events that make up the rounds are called parties.

total: the allowable chapter size as determined by the Houston Panhellenic Council

WHO WE ARE

Houston Panhellenic Council



The Panhellenic Creed

"We, as Undergraduate members of women's fraternities, stand for good scholarship, for guarding of good health, for maintenance of fine standards, and for serving to the best of our ability, our college community. Cooperation for furthering fraternity life, in harmony with its best possibilities, is the ideal that shall guide our fraternity activities."

We, as Fraternity Women, stand for service through the development of character inspired by the close contact and deep friendship of individual fraternity and Panhellenic life. The opportunity for wide and wise human service, through mutual respect and helpfulness, is the tenet by which we strive to live."

Values

Scholarship, service, leadership, sisterhood



OUR COMMUNITY

7 CHAPTERS

AXΩ
ALPHA CHI OMEGA

XΩ
CHI OMEGA

ΔΓ
DELTA GAMMA

ΔΖ
DELTA ZETA

ΦΜ
PHI MU

ΣΚ
SIGMA KAPPA

ZTA
ZETA TAU ALPHA



MORE THAN **\$50,000** RAISED
BY OUR CHAPTERS THROUGH
PHILANTHROPIC EFFORTS IN
2018

6673

SERVICE HOURS COMPLETED
BY OUR MEMBERS IN 2018

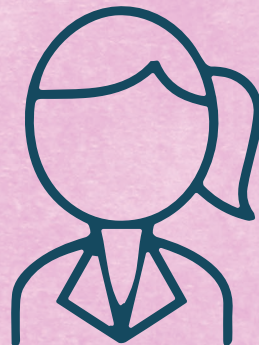


58% OF OUR MEMBERS
ARE UPPERCLASSMEN

42% OF OUR MEMBERS
ARE UNDERCLASSMEN

MORE THAN **250** OF OUR MEMBERS
HAVE PART TIME JOBS

NEARLY **50** OF OUR MEMBERS
HAVE FULL-TIME JOBS



HPC Executive Committee



From left to right:

VP Admin America Espinosa, **AVP Recruitment** Abbie Lindsay, **VP Judicial** Kassy Vivero, **VP Academics** Ashley Johnson,
VP Special Ops Mindy Mayden, **VP Recruitment** Katherine Turner, **VP Programming** Marleny Argueta

FINANCIAL INFO

As a member of a Panhellenic organization, you will be required to pay dues. These dues, which are local and national, help Greek organizations run the way that they do.

How much are dues?

During your new member/provisional member semester, dues will range from \$800-\$1200, depending on the organization. Once you become an initiated member/active member, total semester dues decrease significantly, ranging from \$500-\$800.

Do I have to pay the total amount at one time?

No! Many of our chapters separate dues into monthly or weekly payment plans. Each chapter has a finance officer that will help you work out financial details, if needed.

What do my dues pay for?

National dues contribute to organization support programs, historical preservation, and much more. Local or chapter dues help your chapter to host programming, provide supplies for the chapter house, social events, t-shirts, and more!

Are dues all inclusive?

Some of our chapters do provide all inclusive dues, however, there may be costs that arise every now and then, whether it be to fund t-shirts or supporting another chapter's philanthropy event.



YOUR FIRST YEAR

As a provisional member, there are certain expectations and requirements that all women must meet. Provisional membership timelines last from 6-8 weeks and will be a time of learning, growth, and sisterhood. During your time as a provisional member, you will learn the history, present, and future of the sorority, the expectations of active membership, the responsibilities of a Greek woman, and more. You will also get your first glimpse into the world of sisterhood and what it means to be a Panhellenic woman.

New member meetings

Provisional/new members will be required to attend weekly meetings. During these meetings, the sorority's new member educator will offer you guidance and help you to reflect on your decision to join a Greek organization.

Financial obligations

As a provisional member, your dues and fees will be higher than those of active members. This is because many chapters have one time national and local fees that members must pay upon gaining membership to the organization.

New member retreat

During the provisional membership period, you will be able to attend a retreat to help you bond and grow with your new member class.

Big sister/little sister program

As a new member, you will also be matched with an older member in the chapter to serve as your mentor.

Initiation

Lastly, at the end of your provisional membership, you will participate in a ritual ceremony that, upon completion, will grant you full membership into the organization.

EXPECTATIONS REQUIREMENTS

Both provisional and active members have requirements and expectations that they must meet.

Academics

Every chapter, as well as HPC, has academic and GPA requirements for members. The minimum GPA that our community allows is a 2.35. However, some chapters' GPA requirement is higher.

Meetings

All of our chapters have weekly meetings that members are required to attend. Other required meetings may be scheduled at the discretion of the chapter.

Attendance

Chapters will host events throughout the semester that members may be required to attend. These could include philanthropy events, ritual ceremonies, or meetings.

Study hours

Members are required to complete study hours on either a weekly or bi-weekly basis. The amount of study hours a member has to do largely depends on their GPA and can vary from 0-6 hours per week.

Service hours

Chapters may require members to obtain volunteer/ community service hours outside of chapter events. These requirements can range from 5-20 hours per semester.

Housing

Most of our chapters require members to reside in the sorority townhome for at least 12 months. For those chapters that don't require it, living in the house is highly recommended.



CAMPUS PANHELLENIC TRADITIONS

By being a part of Greek life, you will have the opportunity to participate in UH traditions in a different capacity than the general study body. Greek organizations form partnerships and work together to continue these long standing traditions at UH.



Homecoming

Homecoming is a week of activities leading up to a football game on Saturday in the fall semester. During the week, there is an ongoing Spirit Cup competition, where student organizations compete to prove that they have the most Cougar spirit! Activities include volunteering to clean up campus, a talent show, pep-rally, and more!



Frontier Fiesta

Frontier Fiesta is a three day festival that takes place during the spring semester with concerts, performances, food, and more! Organizations work for weeks before hand practicing for variety shows and volunteering their time to help build a town called "Fiesta City."

Recruitment Information

RECRUITMENT TEAM



The recruitment team includes the VP of Recruitment, Assistant VP of Recruitment, and the VP of Special Operations. They work together to make sure the recruitment process goes smoothly for everyone!

The Vice President of Recruitment, Katy Turner, is in charge of all of the logistics before, during, and after recruitment. She works on all of the behind the scenes stuff, such as schedules and matching!

The Assistant Vice President of Recruitment, Abbie Lindsay, works on marketing recruitment and the Panhellenic Community. She also runs all of our social media pages!

The VP of Special Ops, Mindy Mayden, is the director of the Recruitment Counselors. She has trained them on how to be the best they can be for you!

RECRUITMENT COUNSELORS



What is a recruitment counselor? A recruitment counselor is an impartial representative of the Houston Panhellenic Council who understands and implements the purposes and goals of the College Panhellenic Association in recruitment through direct contact with PNMs. Recruitment counselors will work in groups of three to guide, assist, and counsel PNMs through the Panhellenic primary recruitment process.

Responsibilities to PNMs:

- Provide thorough knowledge of the Panhellenic community.
- Promote the positive benefits of sorority membership and the impact the Panhellenic community has on campus.
- Engage PNMs in discussions of their personal values and how those values will better inform their decision-making.
- Advise PNMs through the recruitment process by finding effective ways to help them reason how their values connect with each chapter.
- Encourage PNMs to keep an open mind throughout the process and to approach each chapter as a group that could develop them personally.
- Stay in contact with each PNM to provide support and guidance that will contribute to her retention throughout the recruitment process.
- Serve as a positive contact and sorority role model during and after recruitment.

PRIMARY RECRUITMENT INFO

SEPTEMBER 5-9TH 2019

Required orientation (attend only one date)

AUGUST 28TH, 2019 • 6-8PM • STUDENT CENTER THEATER

SEPTEMBER 3RD, 2019 • 6-8PM • STUDENT CENTER THEATER

Orientation is an opportunity for PNMs to meet their RCs and the other women in their groups. This is also a time where PNMs will learn more about the recruitment process, information about each round and recommended attire, and so much more! This first meeting is to help PNMs feel more comfortable with each other and the process as a whole. What to wear: Casual and comfortable!

SISTERHOOD ROUND 1 • SEPTEMBER 5TH, 2019 • 4-10PM • STUDENT CENTER

SISTERHOOD ROUND 2 • SEPTEMBER 6TH, 2019 • 4-10PM • STUDENT CENTER

PHILANTHROPY ROUND • SEPTEMBER 7TH, 2019 • 9AM-9PM • STUDENT CENTER

PREFERENCE ROUND • SEPTEMBER 8TH, 2019 • 10AM-7PM • BAYOU OAKS

BID DAY • SEPTEMBER 9TH, 2019 • 4-10PM • STUDENT CENTER

How do I register for recruitment?

Visit uh.mycampusdirector2.com to complete the application!

Early bird Registration May 1 - June 30th \$65

Regular Registration July 1 - August 17th \$80

Last Chance Registration August 18th - August 30th \$95



SISTERHOOD ROUNDS

SEPTEMBER 5TH AND 6TH, 2019
4-10PM • STUDENT CENTER

During sisterhood rounds, PNMs will have the opportunity to meet all seven HPC sorority chapters at UH. PNMs will attend three chapter events (parties) during the first round (Thursday) and four chapter events during the second round (Friday) and will be able to talk with chapter members in a casual setting.

What to wear

HPC will provide you with a shirt for this round! With this shirt, you can wear any cute bottoms, such as jeans, skirts, shorts etc. Shoe choices are up to you, as well! Cute earrings and a necklace! Feel free to dress this shirt up as much as you want, but remember that this is the most casual round!

What NOT to wear

Athletic bottoms, such as leggings, Nike shorts, tennis skirts, etc. Stay away from sneakers or shoes that you can't walk in.

PHILANTHROPY ROUND

SEPTEMBER 7TH, 2019
9AM-9PM • STUDENT CENTER

Philanthropy round is a chance for chapters to give PNMs a deeper glance at their chapter and what they are passionate about. This round offers PNMs more in depth information about the chapter events they attend. During this round, each woman in the recruitment process will attend a maximum of four chapter events.

What to wear

Brunch/casual/daytime dresses, rompers, or jumpsuits. Dress pants and nice blouses are also suggested. Flats, wedges, or nice sandals. Earrings and a cute necklace. Wear something that shows off your style!

What NOT to wear

Denim and sneakers.





PREFERENCE ROUND

SEPTEMBER 8TH, 2019
10AM-7PM • BAYOU OAKS

Preference Round is the most intimate round of recruitment. PNMs will visit a maximum of two chapter events and learn more about their rituals and traditions. After the completion of this round, PNMs will reflect on the recruitment process with their Recruitment Counselor and prepare for Bid Day.

What to wear

This is the most formal of all the rounds. Cocktail or nice church/event dresses, jumpsuits, or dress pants and a blouse are suggested. Heels or nice flats are also suggested. Jewelry that compliments the outfit!

What NOT to wear

Denim, shorts, casual shoes

BID DAY

SEPTEMBER 9TH, 2019
4-10PM • STUDENT CENTER

Bid day is arguably the most exciting day of a woman's Greek experience! PNMs will arrive at the Student Center and all open their bid cards simultaneously. Then, everyone will run home to their sisters at Lynn Eusan Park. PNMs should be prepared to celebrate their new sorority membership for the remainder of Monday evening.

What to wear

Denim shorts, athletic shorts/skirt, comfortable shoes - you will be "running" home! Your chapter will have a t-shirt for you, so bring a small bag and wear a shirt that you can easily change out of!

What NOT to wear

Heels!



RECRUITMENT TIPS

BE YOURSELF & stay true to yourself

The desire to “fit in” will definitely be there, but “fitting in” doesn’t exist! Don’t let who you “think” you should be overpower who you are. Keep your personal values close and let those help to guide you. Let your personality and style shine through!

Trust the process

Try not to stress yourself out too much! We know that Recruitment is intense, but the process really does work. If you’re feeling discouraged, talk to your Recruitment Counselor or a member of Panhellenic Exec. We are here to help. You belong here and you will find your home!

Stay positive

As mentioned, we know that the Recruitment process can be a lot, but staying positive is super important. Don’t feed off of others negative energy and stress, but make the best of the process and experience!

Ask questions

There is a lot to learn about Greek life, especially if you don’t have friends or family involved. Don’t be afraid to ask questions! You are not expected to know everything and there are tons of resources for you. Recruitment Counselors, Panhellenic Exec, advisors, this lookbook, and so many other things are here to help you!

Make friends with other PNMs

Other women going through Recruitment will be some of your greatest supporters during this time and beyond. They are going through the same process as you. Watching them grow throughout Recruitment and in their time as a Panhellenic woman can be one of the most rewarding things you will experience!



Our Chapters





CHI OMEGA

Nickname
"Chi O"
Colors
cardinal and straw
Symbols
skull and crossbones
Values
Friendship, Services to Others, Personal Integrity, Academic Excellence and Intellectual Pursuits, Community and Campus Involvement, Career and Personal Development

Founding year
1895
UH charter year
1956
Sisterhood events
Retreats, movie nights, Painting with a twist
National philanthropy
Make-a-Wish
Local philanthropy
The Center Houston

UH chapter website
houstonchiomega.com
National website
chiomega.com
Fun facts

The 2018 Homecoming Queen is a Chi Omega, Chi Omega is the largest Women's Fraternal Organization.

"SISTERS INSPIRED BY OUR VALUES WHO SERVE THE WORLD WHILE KEEPING CHI OMEGA EVER AT HEART."

ALPHA CHI OMEGA

Nickname
"A Chi O"
Colors
olive green and scarlet red
Symbols
Red carnation, lyres, and pearls
Values
academic interest, character, financial responsibility, leadership ability, personal development

Founding year
1885
UH charter year
1956
Sisterhood events
Retreats, game and movie nights, sleepovers
National philanthropy
Domestic Violence Awareness
Local philanthropy
Houston Area Women's Center

UH chapter website
houstonalphachiomega.com
National website
alphachiomega.org
Fun facts
AXO sisters are involved in fun internships with the Houston Rockets, Houston Texans, Hunter Bell NYC, and more!

"TOGETHER LET US SEEK THE HEIGHTS"
"REAL. STRONG. WOMEN."





DELTA ZETA

Nickname
"Dee Zee", "DZ"

Colors
rose and green

Symbols
Pink Killarney Rose, Diamond,
Turtle, Roman Lamp

Values
Leadership, Academic Excellence,
Philanthropic Efforts, Personal
Development, and Sisterhood

Founding year
1902

UH charter year
1956

Sisterhood events
Dave and Busters, Ladies Night Out,
Retreat, DZ Brunch, Houston Zoo, Yoga

National philanthropy

Speech and Hearing

Local philanthropy

The Center for Hearing and Speech

UH chapter website
uhdeltazeta.org

National website
deltazeta.org

Fun facts

1st place in Frontier Fiesta 2018 & 2019,
offer many leadership opportunities to
our members

"TRULY AMAZING"

DELTA GAMMA

Nickname
"Dee Gee"

Colors
bronze, pink, and blue

Symbols
Anchor

Values
The objects of this Fraternity shall be to
foster high ideals of friendship among
women, to promote their educational
and cultural interests, to create in them
a true sense of social responsibility, and
to develop in them the best qualities of
character.

Founding year
1873

UH charter year
1956

Sisterhood events
Athletic classes, art classes,
retreats, sleepovers

National philanthropy

Service For Sight

Local philanthropy

The Lighthouse of Houston, Prevent
Blindness Texas, Guide Dogs of Texas

UH chapter website
uhdeltagamma.com

National website
deltagamma.org

Fun facts

offers payment plans for dues, first
sorority to establish an independent
philanthropic foundation

"DO GOOD"





SIGMA KAPPA

Nickname
"SK", "Sig Kap"
Colors
lavender & maroon
Symbols
Heart & Dove
Values
Friendship, Loyalty,
Service & Personal Growth

Founding year
1874
UH charter year
2014
Sisterhood events
Sisterhood Sundaes, Sisterhood Retreats,
Sisterhood Drive-In Movies, Zoo, Movie
Nights
National philanthropy
Alzheimer's Association

UH chapter website
uhsigmakappa.org
National website
sigmakappa.org
Fun facts
dues are all inclusive

"ONE HEART, ONE WAY"

PHI MU

Colors
rose and white
Symbols
Quatrefoil, Lion
Values
Love, Honor, Truth

Founding year
1852
UH charter year
1956
Sisterhood events
Ice cream socials, Mu-vie Nights,
Bath Bomb Making, retreats
National philanthropy
Children's Miracle Network Hospitals
Local philanthropy
Dec My Room

UH chapter website
uh.phimu.org
National website
phimu.org
Fun facts:
second oldest sorority, first sorority to
establish national philanthropy day

"THE FAITHFUL SISTERS"





ZETA TAU ALPHA

Nickname
"Zeta" "ZTA"

Colors
steel gray and turquoise blue

Symbols
Five pointed crown, strawberry, and white violet

Values
Being rather than seeming, loyalty and commitment, responsibility, Humility, Seeking understanding that we might gain true wisdom, service and philanthropy, love, lifelong learning, and leadership.

Founding year
1898

UH charter year:
1956
Sisterhood events
Sisterhood Sundaes, Sisterhood Retreats, Sisterhood Drive-In Movies, Zoo, Movie Nights

National philanthropy
Breast Cancer Education and Awareness

UH chapter website
uh.zetataualpha.org
National website
ZetaTauAlpha.org

Fun facts:
Year-round Zeta Tau Alpha hosts workshops to promote and help members reach mental, physical, academic, and professional goals. Granted the "Verna Hicks Patern" award for our outstanding rituals at our National convention.

"SEEK THE NOBLEST"

Join Our Community

AXΩ

ALPHA CHI OMEGA

Instagram: @uh_axo
Twitter: @uh_axo

XΩ

CHI OMEGA

Instagram: @houstonchio
Twitter: @HoustonChio

ΔΓ

DELTA GAMMA

Instagram: @uhdeltagamma
Twitter: @uhdeltagamma

ΔZ

DELTA ZETA

Instagram: @uhdeltazeta
Twitter: @uhdeltazeta

ΦM

PHI MU

Instagram: @uhphimu
Twitter: @uhphimu

ΣK

SIGMA KAPPA

Instagram: @uhsigmakappa
Twitter: @UHSigmaKappa

ZTA

ZETA TAU ALPHA

Instagram: @UHZTA
Twitter: @UHZTA

Photos courtesy of Catherine Sieraski.
Instagram: @catherinegrace.photography



University of Houston Panhellenic

 @UHpanhellenic

 @UHpanhellenic

 facebook.com/uhanhellenic

 uhanhellenic.com

Application link: uh.mycampusdirector2.com

Recommendation letters: www.uhanhellenic.com/letters

Questions?

Contact Katherine Turner, Vice President of Recruitment at hpc.recruitment.uh@gmail.com